

500 FLY

THE POWER OF INNOVATION

The 500 FLY completely transformed the segment with groundbreaking features like the convertible bow, rotating cockpit sofa, and the remarkable Beach Mode. Its rapid acclaim, multiple awards, and recognition from both customers and industry experts solidified its position as a flagship in the Galeon lineup, firmly establishing itself among the pinnacle of luxury vessels.

The top deck encompasses a dual helm station and forward sundeck, complemented by seating and a wet bar. An optional carbon hardtop bimini provides respite from the sun. The main deck features a generously sized cockpit that extends through the unique Beach Mode, widening the usable area to an impressive six meters. Slide the glass doors to unveil a bar on the port side and extra seating opposite the kitchen.

Two cockpit options cater to different preferences: a 360-degree rotating sofa with a garage below or conventional seating with

a crew cabin and bathroom. Guests can relish the bow's seating area with adjustable backrests, automatically converting into a sundeck. Inside, the bright interior showcases two distinct areas, with the dining and leisure zone situated near the helm. The kitchen, equipped with a full-sized fridge, serves refreshments indoors and out.

Accommodating six passengers, the lower deck includes a midship master with en suite, a VIP cabin at the bow, and a twin guest cabin on the starboard side. The 500 FLY undeniably reigns as a segment leader, celebrated for its groundbreaking innovations, abundant onboard space, and extensive possibilities for interior and engine customization.

FLYBRIDGE LINE

The 500 is a remarkable and innovative model, a four-time winner of the „Yacht of the Year“ award and a top-selling favorite. Undoubtedly, it stands as a pinnacle in its segment.





500 FLY

Beach Mode extends the beam to six meters - serve refreshments at the bar



The roto-seat option allows the cockpit seating to face any direction —



A large flybridge will fit all guests in comfort —



LATI GREY

A bright and welcoming saloon is available with many design choices

500 FLY



Dining and entertainment area with a pop-up TV —



The kitchen comes fully equipped and can serve the outside bar —



The bright VIP cabin offers ample storage —



Master stateroom with en suite bathroom and rest area —



— Quickly drop the back rests and stow away the table for cruising



— The seat rotates 360°



— Serve refreshments to the outside bar to impress the guests



— Incredible cockpit area with the balconies down

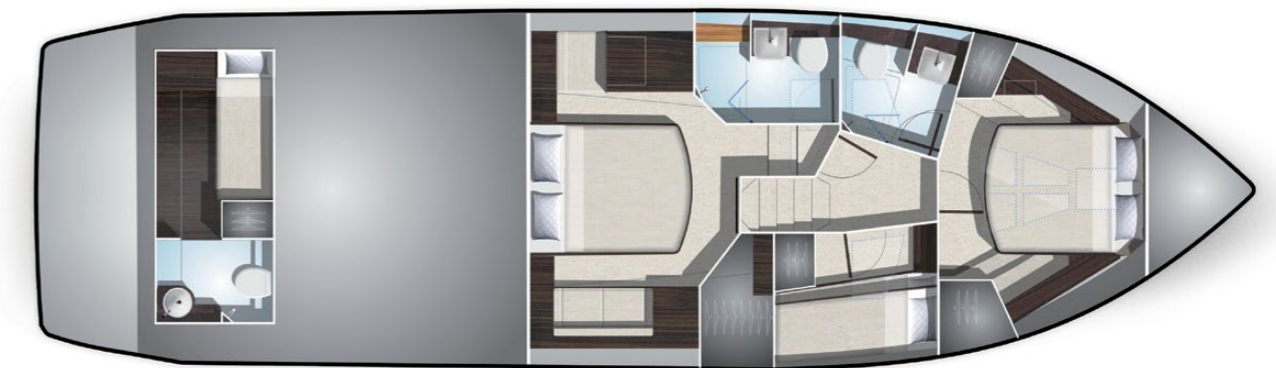
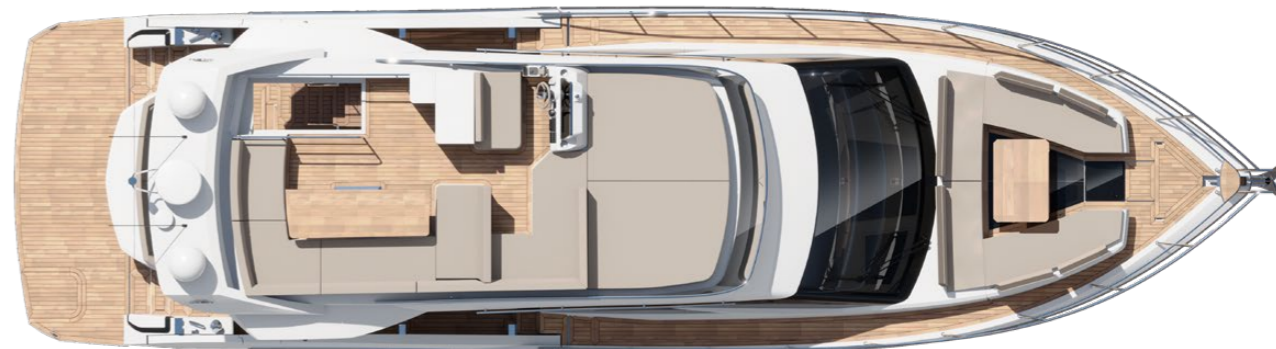
500 FLY

Galeon is enhancing its 2024 lineup, focusing on optimizing space distribution, performance, and design across its popular yacht range.

These new models represent an evolution of the brand's award-winning designs, showcasing Galeon's commitment to innovation and excellence. With a harmonious blend of aesthetics and functionality, these yachts promise to deliver an unparalleled on-water experience, embodying luxury, precision, and the joy of exploration.

MODEL 2024

2024 LAYOUTS



COMING SOON!

500 FLY

MODEL 2024

